

Light efficiency:

40 Lumen/Watt

Light quality:

CRI: 97.4

Color temperature:

3140 K

Output: 12334 lm

Peak: 334298 cd

Power: 307 W

PF: 1.0



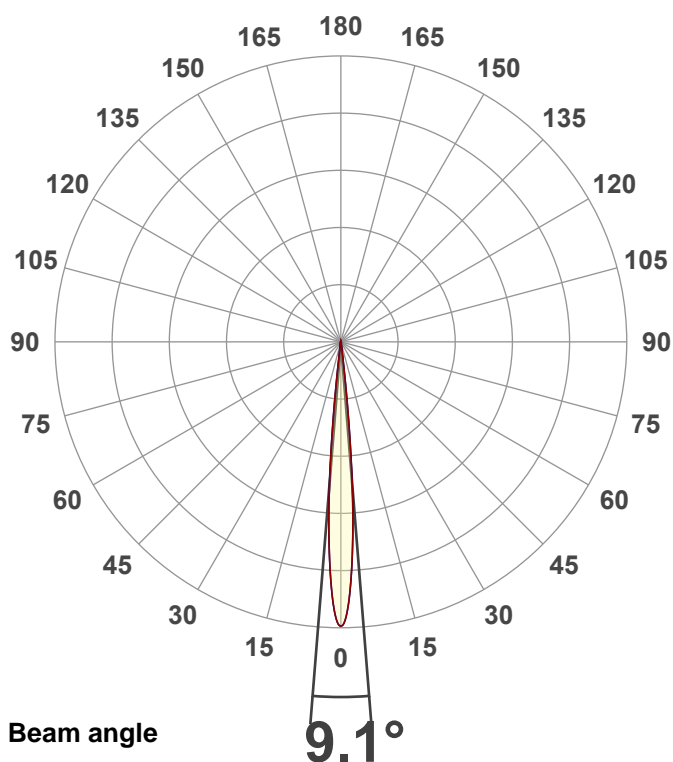
Product name:

PAR Z300 3K (Zoom 9°, Full On)

Item number:

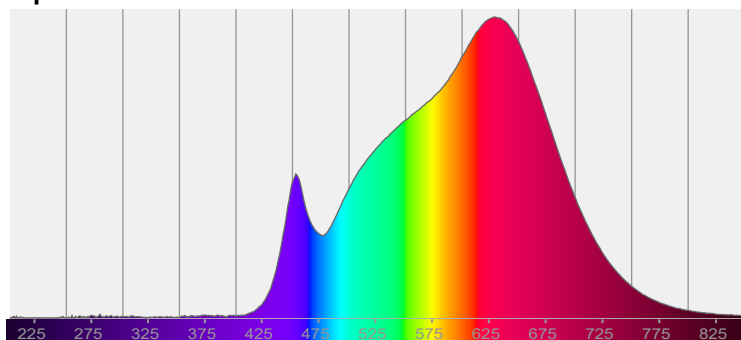
Date and time:

8/16/2025 10:55:57 AM



CIE 1931
x: 0.428
y: 0.403

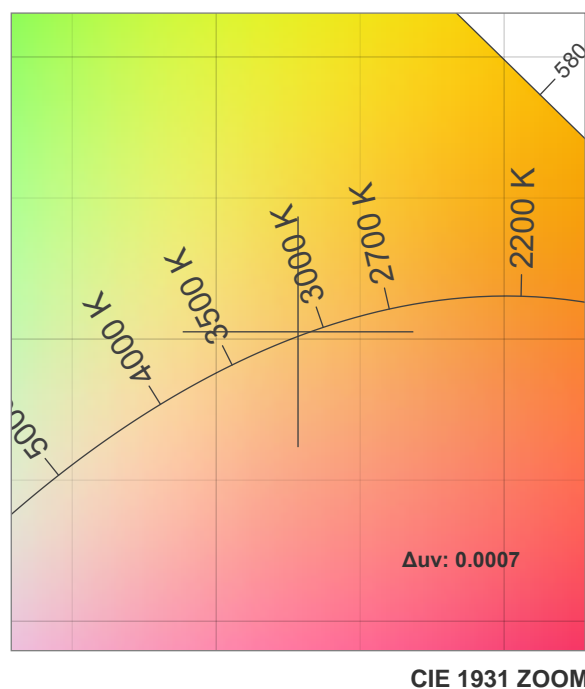
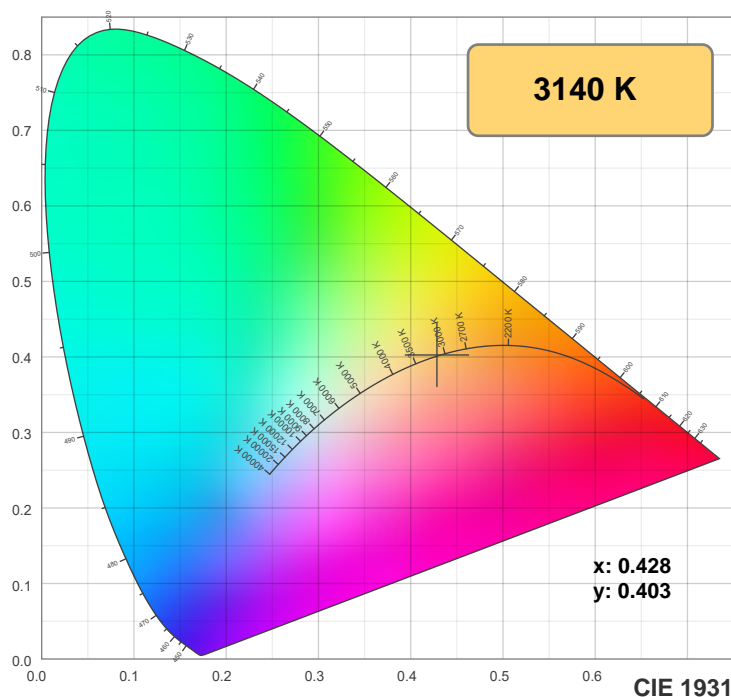
Spectra



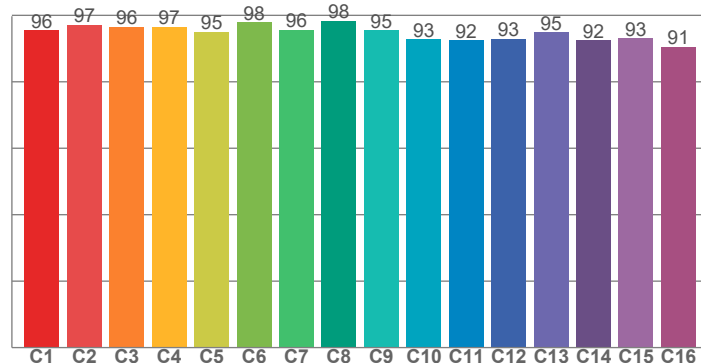
Power

Voltage: 117 V
Current: 2.62 A
Frequency: 0 Hz

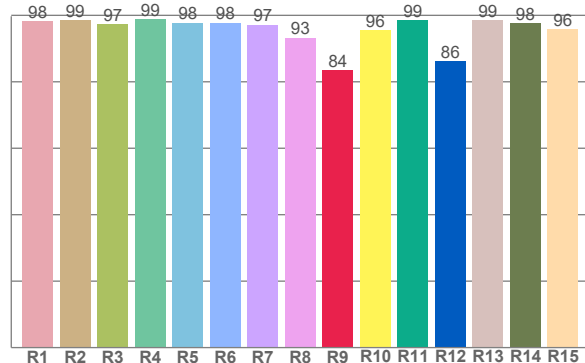
Color details



TM-30: 95.0



CRI: 97.4 (R1-R8)



CRI R values, only R1-R8 are used to calculate final CRI value

R1	R2	R3	R4	R5	R6	R7	R8	R9	R10	R11	R12	R13	R14	R15
98.3	98.6	97.4	98.8	97.8	97.8	97.2	93.3	83.6	95.6	98.6	86.2	98.6	97.7	95.9

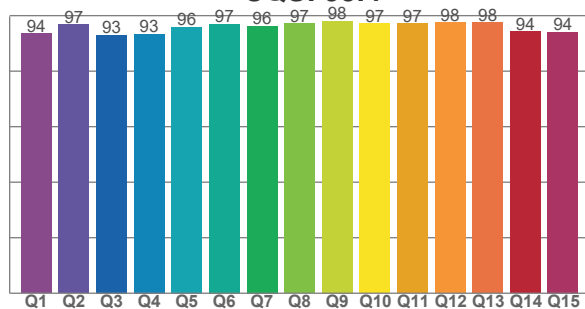
TM30 C values, 16 binned values out of total of 99 C values

C1	C2	C3	C4	C5	C6	C7	C8	C9	C10	C11	C12	C13	C14	C15	C16
95.5	97.2	96.5	96.6	95.1	98.0	95.6	98.4	95.5	92.8	92.5	92.9	94.9	92.5	93.1	90.5

CQS Q values

Q1	Q2	Q3	Q4	Q5	Q6	Q7	Q8	Q9	Q10	Q11	Q12	Q13	Q14	Q15
93.5	96.8	93.0	93.4	95.9	96.9	96.3	97.2	98.0	97.1	97.2	97.5	97.6	94.2	94.0

CQS: 95.4



Color parameters

Color temperature	Color rendering index	Red component	Color fidelity	Color gamut	Color quality scale	Color coordinate cie 1931	Color coordinate cie 1931	Color coordinate	Color coordinate	Color deviation from black body
CCT	CRI	CRI R9	TM30 Rf	TM30 Rg	CQS	x	y	u	v	Δuv
3140 K	97.4	83.6	95.0	99.9	95.4	0.428	0.403	0.246	0.346	0.0007

TM-30 details

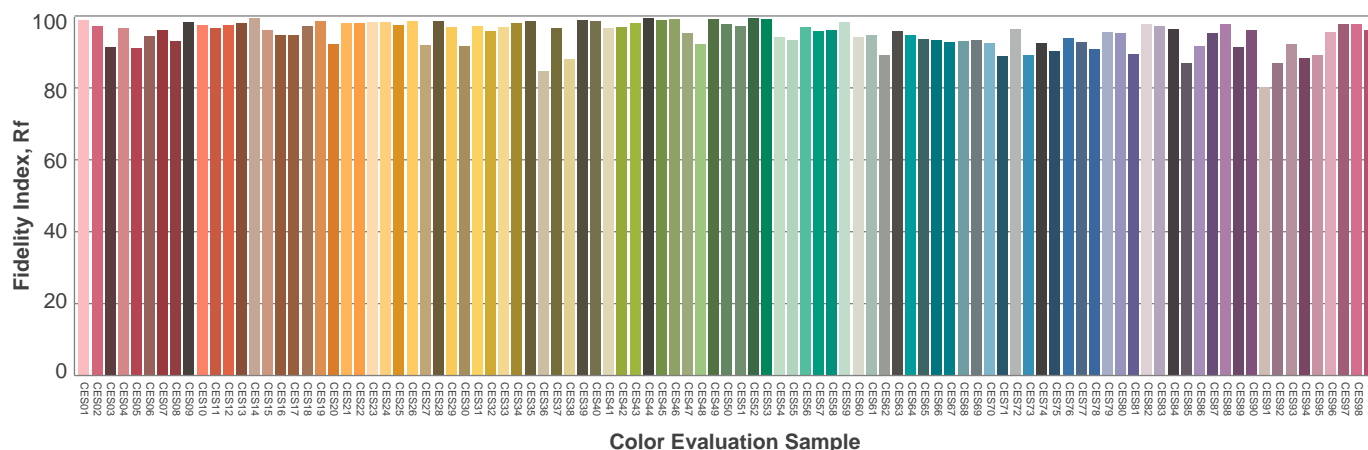
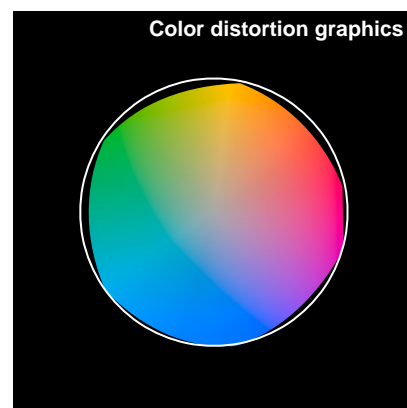
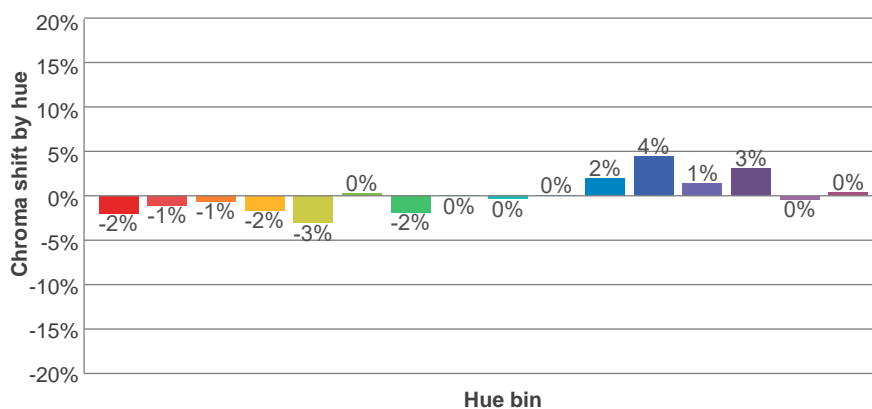
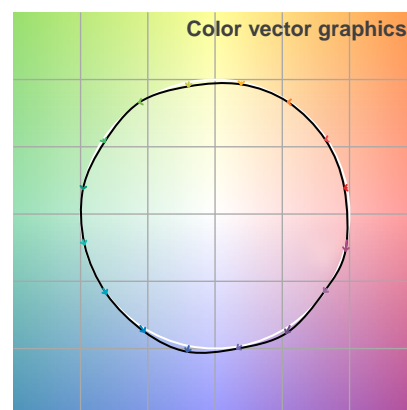
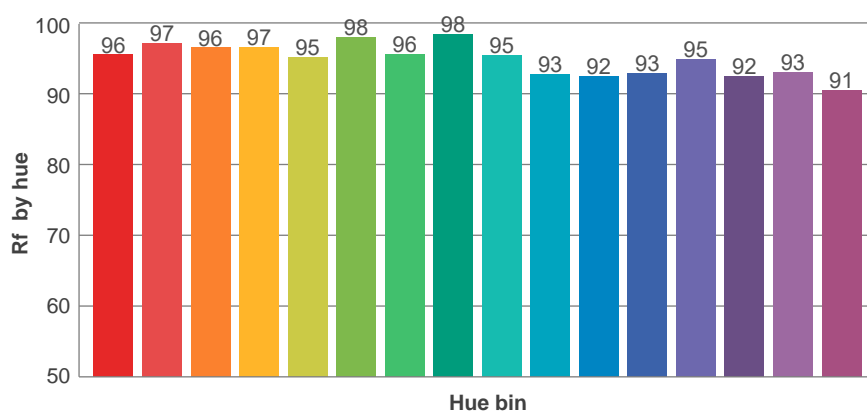
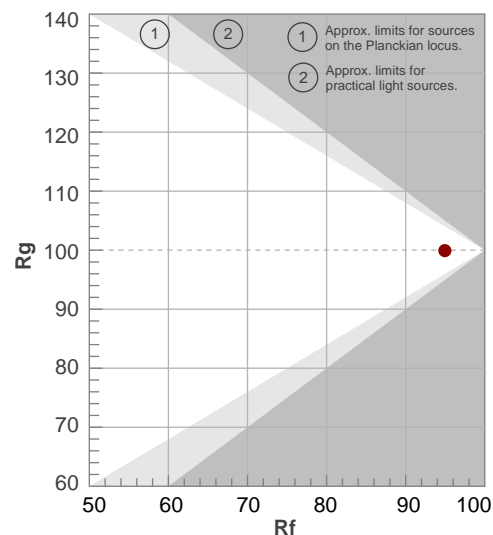
Rf 95.0

Fidelity index Rf

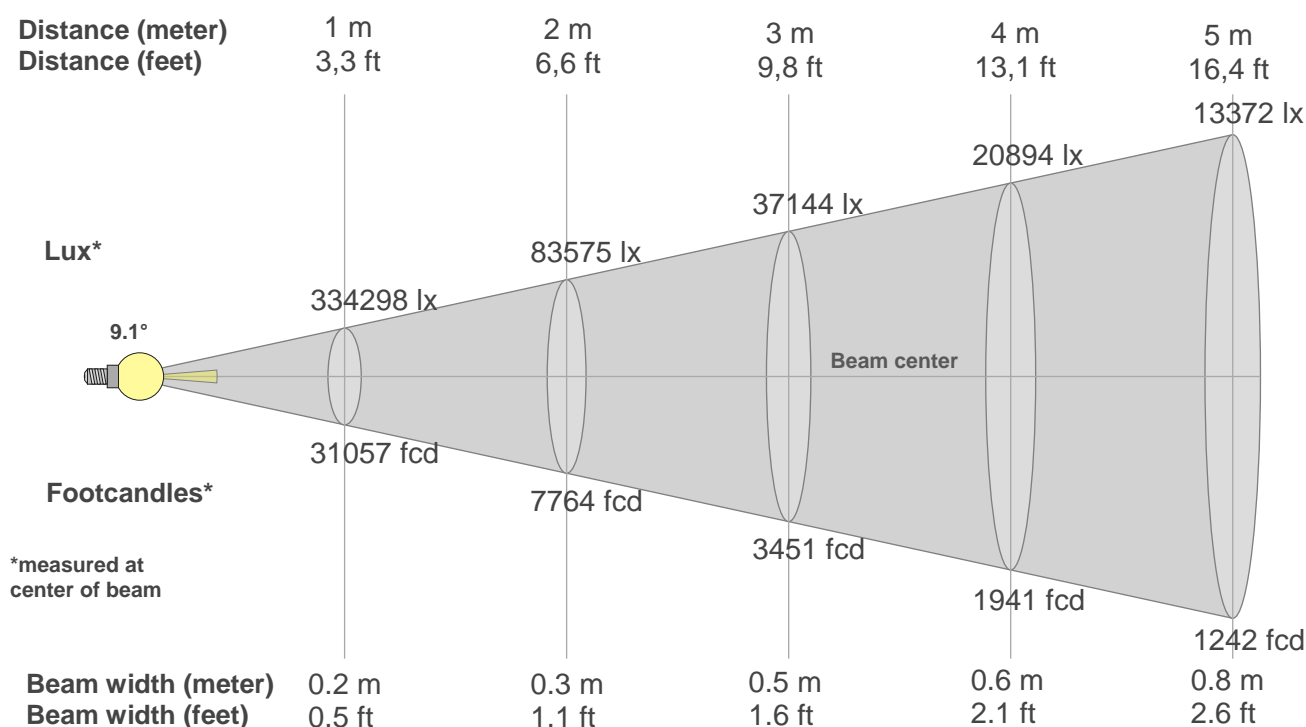
Rg 99.9

Gamut index Rg

Hue Bin	Ri	Shifts (%)	
		Chroma	Hue
1	96	-2%	0%
2	97	-1%	0%
3	96	-1%	1%
4	97	-2%	0%
5	95	-3%	1%
6	98	0%	1%
7	96	-2%	1%
8	98	0%	1%
9	95	0%	3%
10	93	0%	4%
11	92	2%	5%
12	93	4%	0%
13	95	1%	-3%
14	92	3%	-5%
15	93	0%	-3%
16	91	0%	-8%



Beam details



Beam intensities from 1-20m

1m	2m	3m	4m	5m	6m	7m	8m	9m	10m	11m	12m	13m	14m	15m	16m	17m	18m	19m	20m
3.3ft	6.6ft	9.8ft	13.1ft	16.4ft	19.7ft	23ft	26.2ft	29.5ft	32.8ft	36.1ft	39.4ft	42.7ft	45.9ft	49.2ft	52.5ft	55.8ft	59.1ft	62.3ft	65.6ft
334298lx	83575lx	37144lx	20894lx	13372lx	9286lx	6822lx	5223lx	4127lx	3343lx	2763lx	2322lx	1978lx	1706lx	1486lx	1306lx	1157lx	1032lx	926lx	836lx
31057.3 fcd	7764.3 fcd	3450.8 fcd	1941.1 fcd	1242.3 fcd	862.7 fcd	633.8 fcd	485.3 fcd	383.4 fcd	310.6 fcd	256.7 fcd	215.7 fcd	183.8 fcd	158.5 fcd	138 fcd	121.3 fcd	107.5 fcd	95.9 fcd	86 fcd	77.6 fcd

Intensities in 0° c-plane

0°	1°	2°	3°	4°	5°	6°	7°	8°	9°	10°	11°	12°	13°	14°	15°	16°	17°	18°	19°
334k	325k	297k	254k	202k	138k	71k	22k	4k	1k	1k	1k	1k	1k	1k	1k	1k	1k	0k	0k
100%	97%	89%	76%	60%	41%	21%	7%	1%	0%	0%	0%	0%	0%	0%	0%	0%	0%	0%	0%

Intensities in 90° c-plane

0°	1°	2°	3°	4°	5°	6°	7°	8°	9°	10°	11°	12°	13°	14°	15°	16°	17°	18°	19°
334k	325k	297k	254k	202k	138k	71k	22k	4k	1k	1k	1k	1k	1k	1k	1k	1k	1k	0k	0k
100%	97%	89%	76%	60%	41%	21%	7%	1%	0%	0%	0%	0%	0%	0%	0%	0%	0%	0%	0%

Intensities in 180° c-plane

0°	1°	2°	3°	4°	5°	6°	7°	8°	9°	10°	11°	12°	13°	14°	15°	16°	17°	18°	19°
334k	325k	297k	254k	202k	138k	71k	22k	4k	1k	1k	1k	1k	1k	1k	1k	1k	1k	0k	0k
100%	97%	89%	76%	60%	41%	21%	7%	1%	0%	0%	0%	0%	0%	0%	0%	0%	0%	0%	0%

Intensities in 270° c-plane

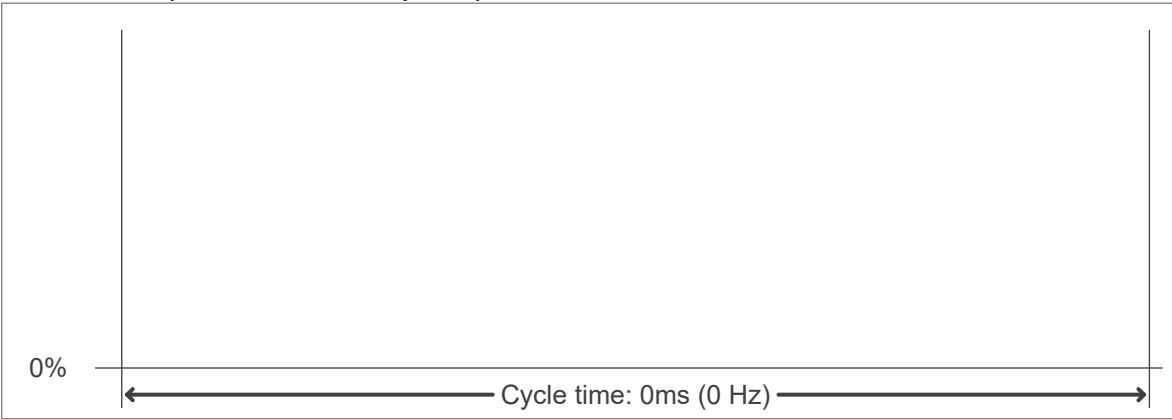
0°	1°	2°	3°	4°	5°	6°	7°	8°	9°	10°	11°	12°	13°	14°	15°	16°	17°	18°	19°
334k	325k	297k	254k	202k	138k	71k	22k	4k	1k	1k	1k	1k	1k	1k	1k	1k	1k	0k	0k
100%	97%	89%	76%	60%	41%	21%	7%	1%	0%	0%	0%	0%	0%	0%	0%	0%	0%	0%	0%

Beam angle 50%	Field angle 10%	Cutoff angle 2,5%	Intensity ratio in 120° cone	Intensity ratio in 90° cone
9.1°	13.4°	15.2°	72.1%	67.2%

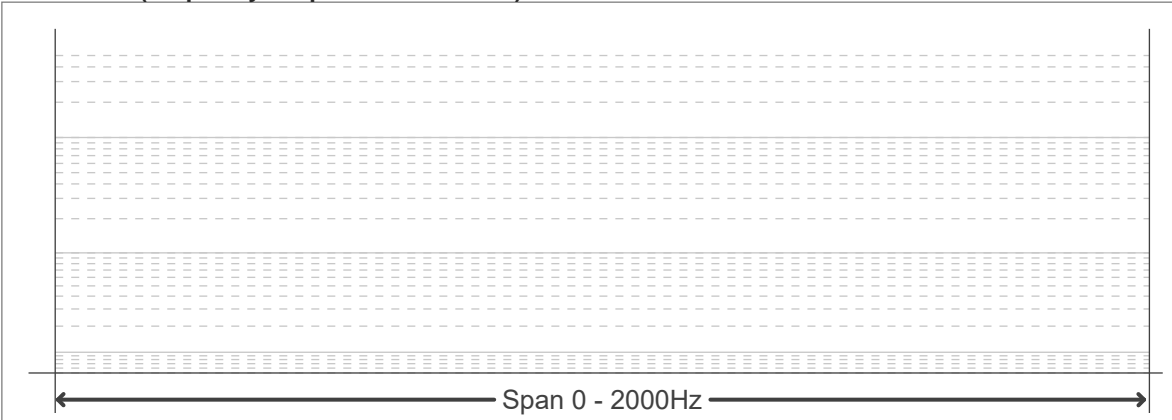
Flicker curve (complete sampled flicker signal)



Flicker frame (frame of one flicker period)



Flicker FFT (frequency scope of flicker curve)



Flicker results:

Flicker frequency:		n/a Hz	
Flicker index:	n/a	JA8/10 40Hz	n/a %
Flicker percentage:	n/a %	JA8/10 90Hz	n/a %
SVM: (Visual flicker)	n/a	JA8/10 200Hz	n/a %
PstLM	n/a	JA8/10 400Hz	n/a %
Mp	n/a	JA8/10 1000Hz	n/a %

Flicker conditions:

Sample rate:	n/a samples/second
--------------	--------------------